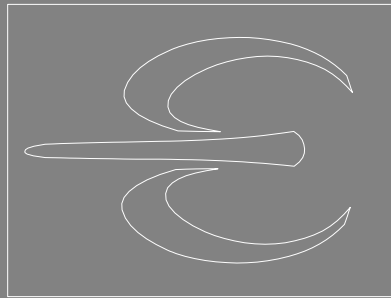


MORTARS

◆ EStonetex® System ◆

Reproductions of stones, rocks, bricks, woods, etc ...



ESTECHA®

Theme decorations of waterfalls, facades, wineries, commercial premises hotels





ESTonetex® System

Reproductions of stones, rocks, bricks, woods, etc ...

Introduction

ESTonetex® brings together the texture and performance of a special material that constitutes a noble cladding, respecting to the smallest detail the nature of the stone, enhancing the value of modern and ancient architecture.

wide variety of textures and colors

multitude of combinations

specialized consultations

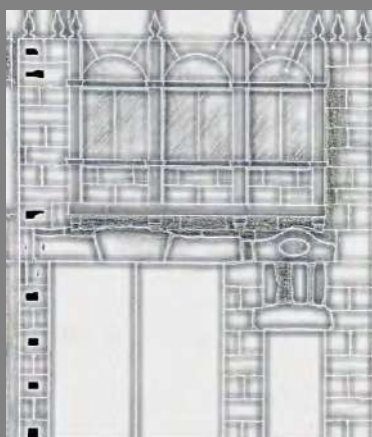
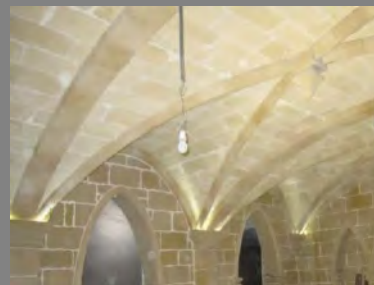
original proposals

realization of preliminary projects

draft

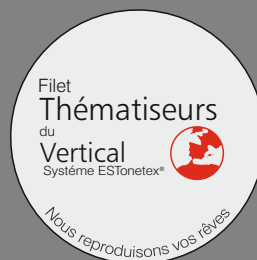


the work done



WORKS CARRIED OUT WITH THE ESTonetex® System

- FACADES (arches, pipelines, friezes, vaults, etc ...)
- WAREHOUSES
- COMMERCIALLOCALS
- HOTELS, RESTAURANTS ANDBARS
- HERITAGERESTORATION
- ROCS AND THEMATIZATIONS WITH ROCKS
- CIVIL AND PUBLIC WORKS(walls, housing developments, roundabouts, etc ...)





With the ESTonetex®-Expanded hand applied or machine projected mortar, any type of stone is made to decorate facades with rustic or modern styles, both new and old, regardless of the type of support (ceramic and concrete blocks, old stone and worn, brick, etc ...).

new and old clad facades
with mortar stone in different
types, formats, textures and colors.



door remarks windows and balconies
cornices, moldings and lintels manufactured in our workshops





ESTonetex® System

FACADES

New buildings and constructions with a different image,
coated with ESTonetex®-Expanded mortar.



rim, lintels and moldings embellish the facades
reproductions of aged and irregular ashlar stone





Redecorating spaces to make environments more attractive,
from the entrance to the interior, with the ESTonetex®-Expanded mortar.

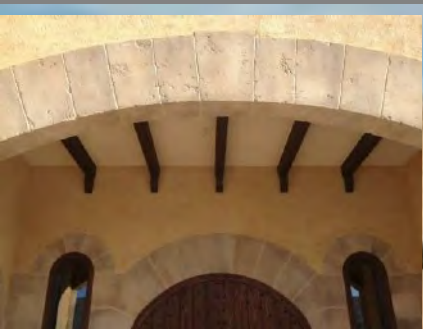


coatings with original textures

tuning finishes and decorations

bars with medieval or contemporary styles

decorative projects of locals





ESTonetex® System

WINERIES

We customize spaces
for cellars in basements, subs oils or garages.



rustic, medieval and modern homes

brackets, capitals and moldings





We have original and exclusive proposals to set these special places, all with ESTonetex®-Expanded mortar.



decorative accessories

custom themes

profiled arches



ESTonetex®-Expanded

MORTAR FOR THEMING OF STONES, ROCKS,
BRICKS, WOOD



DESCRIPTION

The ESTonetex®-Expanded mortar, belonging to the ESTonetex® System, (also called Tixo or TXT) is a moldable and moldable thixotropic mortar that expands due to its composition and is especially suitable for decorative theming, creation and restoration of horizontal and vertical walls indoors, outdoors, on brick, cement and concrete substrates, mesh structures metallic or other types of materials, porex with mesh, natural stones and artificial. Not suitable for waterfalls or under water (for these we have the alternative with ESTonetex®-Extreme).

USES

Especially recommended for use in theming of stones, rocks bricks, wood, logs, cornices, restorations, allowing perfect reproductions of almost any type of construction material, smooth, rustic, natural and artificial stones, concrete, metal, in decorations interiors and exteriors, homes, theme parks, housing estates, hotels, discos, zoos, etc ...

It is also used for conventional and decorative finishes of the most diverse nature, reducing the weight up to 10% compared to plaster mortars usually. High thixotropic performance, applications from 0.8 cm up to 15-20 cm volume in a single coat.

ADVANTAGES

- Great plasticity and high mechanical resistance.
- Thixotropic. Very good workability.
- Manual or machine application. Projectable.
- Excellent adherence.
- Indoor and outdoor, water and weather resistant.
- Breathable.
- Excellence reprofiling properties.

Only with water:

For every 23 kg will be used approx. 5.7-6 l of water. Adjust the mixing ratio in each case, depending on the temperature, environment and air humidity.

PACKAGING

ESTonetex®-Expanded is packed in multi-foil paper bags with 23 kg (+/- 2%) anti-humidity sheet. 1104 kg pallet (48 bags).

TECNICAL DATA

Product identification and application data	
Appearance	Powder
Color	Sandstone, white, gray
Yield	16,5 kg/m ² per 1 cm of thickness
Composition	White cement, limestone sands. calcium dihydroxide, additives.
Workability time:	
Start of setting	3-6 H according temperature and humidity
End of setting	4-7 H
Application temperature	Between 5°C and 30°C
Minimum thickness per layer	5 mm
Maximum thickness per layer	200 mm
Pigmented or tinted	EST-26 Multilite, EST-MultiPol EST-Mixol (check color chart)
Compatibility	do not mix with other products
Special additives	EST-26 Multilite
Category	F1-CSIV W2 with CE marking

Recommended to waterproof with EST-3 Plus N



ESTonetex® System

HERITAGE RESTORATION



Using the ESTonetex®-Restaura mortar you get identical textures and finishes with the originals.



deteriorated stone replicas
old restorations



ESTonetex®-Restaura Cal Plus

COMPONENT A
for mix with
EST-26 Multilite

RESTORATION



COMPONENTS: A + B

DESCRIPTION

ESTonetex®-Restaura Cal Plus its special composition of lime aerial provides a more stable natural cure and is especially indicated for heritage restoration, theming, sculptures for its easy carving, creation and restoration of horizontal and vertical faces both indoors and outdoors. With high thixotropic performance, can be applied from 5mm to 150-200mm volume in one coat.

USES

Especially recommended for heritage restoration, making rocks and rockeries, in rehabilitation such as plaster or grouting and restitution mortar. Its composition with lime make it ideal on old walls and bases with lime components, where curing, compatibility, soldering and durability are of special importance.

ADVANTAGES

- High breathability and protection against rainwater.
- Thixotropic. Very good workability.
- Manual or machine application. Projectable.
- Greater resistance to salts.
- Indoor and outdoor, very low emissions of VOCs.
- Compatible with old masonry.
- Excellent reprofiling properties.
- New construction and rehabilitation.
- Fine texture for various finishes.
- Mineral product.

With EST-26 Multilite:

Previous dissolution 1: 6 parts in water. For every 25 Kg, between 5,6-5.8l of solution will be used (in summer the will increase by approx. 100-200 ml of solution).

PACKAGING

ESTonetex®-Restaura Cal Plus is packed in multi-foil paper bags with 25 kg (+/- 2%) anti-humidity sheet. 1200 kg pallet (48 bags).

TECNICAL DATA

Product identification and application data	
Appearance	Powder
Color	Sandstone
Yeld	16 kg/m ² per 1 cm of thickness
Composition	Air lime, white cement, limestone sands. various additions.
Workability time	>3-5 H
Application temperature	Between 5°C and 30°C
Minimum thickness per layer	2 mm
Maximum thickness per layer	150 mm
Pigmented or tinted	EST-26 Multilite, EST-MultiPol+Mixol EST-Mixol (check color chart)
Compatibility	do not mix with other products
Special additives	EST-26 Multilite
Category	F1-CSIV W2 with CE marking
Reaction to fire	Class A1

Recommended to waterproof with EST-3 Plus N



TÜVRheinland®
Precisely Right.



ETAG 004

EST-26 Multilite

RESTORATION

COMPONENT B for mix with con ESTonetex®-Restaura Cal Plus

SILICATE MINERAL ADDITIVE FOR RESTORATION AND THEMING



COMPONENT B

DESCRIPTION

EST-26 Multilite is a multifunction concentrate, consolidating bases minerals, based on a silicate micro-emulsion, in aqueous dispersion, which reacts with the mineral base on which it is applied, forming the same crystalline body, insoluble in water and highly breathable.

Additive for the mortar ESTonetex®-Restaura Cal Plus.

USES

Specially designed for use in mineral bases and thematizations of the ESTonetex® System, to create colored glazes with EST-Mixol, or consolidating of mortar or natural stone surfaces.

ESTonetex® mortar additive: gives the mixture plasticity, workability, hardness, setting control and greater thixotropy.

Theming, restoration, rehabilitation of facades, historical heritage, etc ...

Mixing ratio: Previous dissolution 1: 6 parts in water with EST-26 Multilite. For every 25 Kg, between 5.6 - 5.8l of solution will be used (in summer the will increase by approx. 100-200 ml of solution).

Color-consolidating glazes: to create the desired natural colors and realism to ESTonetex® mortars or mineral bases in general, EST-26 Multilite is the colorless base to use with EST-Mixol Pigments.

As a colorless consolidant of mineral funds: in works that require of having consolidated, durable surfaces and high breathability.



ADVANTAGES

- Great consolidating power.
- High penetration by silicification.
- Ease of application.
- Indoor and outdoor.
- Compatible with old masonry.
- New construction and rehabilitation.
- Mineral product. Biodegradable.

PACKAGING

EST-26 Multilite (transparent) is packaged in 10 liter plastic drums.

TECNICAL DATA

Product identification and application data	
Appearance	Liquid
Color	Colorless and also 6 colors to use
Gloss level	From mineral matte to medium gloss
Pigmentation	Maximum 5% with EST-Mixol
Yeld	3-6 m²/l
Composition	Modified silicates
Density	Approximately 1.04
PH	Approximately 11
Application temperature	Between 5°C and 30°C
Compatibility	do not mix with other products
Dissolution: glazes or consolidant as additive for mortars	from pure to 1:3 parts of water dissolution 1:6 parts of water
Storage	1 year at room temperature



ESTonetex® System

AQUARIUMS

With the ESTonetex®-Extreme mortar you can reproduce all the elements decorative even submerged, creating volumetries and textures with real appearances.



trees, logs and rocks
reefs and islets



ESTonetex®-Extreme

AQUARIUMS

COMPONENT A for mix with EST-26 Multilite



COMPONENTS: A + B

DESCRIPTION

ESTonetex®-Extreme, mixed with EST-26 resin, due to its special composition, is a mortar moldable thixotropic with high hardness and resistance to wear, for the creation and restoration of horizontal and vertical volumes both in compromised indoors, like outdoors or for immersion. Highthixotropic performance, can be applied from 5 mm to 150 mm thickness in a single coat.

Additive with water solution and EST-26 Multilite.

USES

Especially recommended where the best performance is required possible in a CSIV plaster mortar, since the ESTonetex®-Extreme mortar triples the norm resistance which is 6 N / mm², reaching up to 20 N / mm² with correct curing. Ideal for:

- Surfaces that will be immersed in fresh or salt water.
- For professional theming in zoos, aquariums and harsh climates.
- Climatic conditions of the environment that make it difficult for CSIV mortars standard cure properly and reach optimum hardness.
- For surfaces subject to high mechanical wear.
- For critical volumetric reconstruction in restoration and heritage.

ADVANTAGES

- Extreme mechanical resistance.
- Thixotropic. Very good workability.
- Manual or machine application. Projectable
- Excellent adherence.
- Indoor and outdoor, water and weather resistant.
- Compensated shrinkage.
- Plastic consistency and easy to shape.

With EST-26 Multilite:

Previous dissolution 1: 5 parts in water.

For every 25 kg of ESTonetex®-Extreme, between 4.2 - 4.5 l of dissolution (in summer it will increase by approx. 100-200 ml of dissolution).

PACKAGING

ESTonetex®-Extreme is packed in multi-foil paper bags with 25 kg (+/- 2%) anti-humidity sheet. 1200 kg pallet (48 bags).

TECNICAL DATA

Product identification and application data	
Appearance	Powder
Color	Sandstone
Yield	18-20 kg/m ² per 1 cm of thickness
Composition	White cement, limestone sands. inorganic additions.
Workability time	>4-6 H
Application temperature	Between 5°C and 30°C
Minimum thickness per layer	5 mm
Maximum thickness per layer	150 mm
Pigmented or tinted	EST-26 Multilite, EST-MultiPol
	EST-Mixol (check color chart)
Compatibility	do not mix with other products
Special additives	EST-26 Multilite
Category	F1-CSIV W2 with CE marking
Reaction to fire	Class A1

Recommended to waterproof with EST-3 Plus N



DAKKS
Dokumentationsstelle
D 2004 100215 03 000



TÜVRheinland®
Precisely Right.



ETAG 004

EST-26 Multilite **COMPONENT B** for mix with ESTonetex®-Extreme

AQUARIUMS

SILICATE MINERAL ADDITIVE FOR AQUARIUMS AND THEMING



COMPONENT B

DESCRIPTION

EST-26 Multilite is a multifunction concentrate, consolidating bases minerals, based on a silicate micro-emulsion, in aqueous dispersion, which reacts with the mineral base on which it is applied, forming the same crystalline body, insoluble in water and highly breathable.

USES

Specially designed for use in mineral bases and thematizations of the ESTonetex® System, to create colored glazes with EST-Mixol, consolidating of mortar or natural stone surfaces and as an additive for mortars ESTonetex® that indicate their use.

ESTonetex® mortar additive: gives the mixture plasticity, workability, hardness, setting control and greater thixotropy.

Theming, restoration, rehabilitation of facades, historical heritage, etc ...

Mixing ratio: Previous dissolution 1: 6 parts in water with **EST-26 Multilite** For every 25 Kg, between 5.6 - 5.8l of solution will be used (in summer the will increase by approx. 100-200 ml of solution).

Color-consolidating glazes: to create the desired natural colors and realism to ESTonetex® mortars or mineral bases in general, **EST-26 Multilite** is the colorless base to use with EST-Mixol Pigments.

As a colorless consolidant of mineral funds: in works that require of having consolidated, durable surfaces and high breathability.



ADVANTAGES

- Great consolidating power.
- High penetration by silicification.
- Ease of application.
- Indoor and outdoor.
- Compatible with old masonry.
- New construction and rehabilitation.
- Mineral product. Biodegradable.

PACKAGING

EST-26 Multilite (transparent) is packaged in 10 liter plastic drums.

TECNICAL DATA

Product identification and application data	
Appearance	Liquid
Color	Colorless and also 6 colors to use
Gloss level	From mineral matte to medium gloss
Pigmentation	Maximum 5% with EST-Mixol
Yeld	3-6 m²/l
Composition	Modified silicates
Density	Approximately 1.04
PH	Approximately 11
Application temperature	Between 5°C and 30°C
Compatibility	do not mix with other products
Dissolution: glazes or consolidant as additive for mortars	from pure to 1:3 parts of water dissolution 1:6 parts of water
Storage	1 year at room temperature



ROCKS and WATERFALLS

To get the different types of rocks, the mortar is used ESTonetex®Expanded (in areas where it does not touch or splash water) or ESTonetex®Extreme (in water areas) with the specific techniques for create volumetry and real texture of the stone.



integration into the environment

texture mixes





ESTonetex® System

ROCKS and WATERFALLS

Following the natural effects of the aged, to the rocks
They are applied a hydrophobic treatment that does not form a layer.



rigid volumetric structures

waterfalls



ESTonetex®-Sulforesistente

SPECIAL THEMATIC MORTAR FOR
SUBMERGED AREAS,
POOLS, WATERFALLS



DESCRIPTION

ESTonetex®-Sulforesistente is a one-component mortar, compensated and fiber-reinforced shrinkage for zone theming submerged under water (swimming pools, waterfalls, etc ...) or requiring resistance to salts and chlorides in water. Allows shaping, sculpting, molding and stamp any volumetry or surface. Formulated based on cements special high-quality sulfur-resistant aggregates, granulometry selected, light aggregates, organic and inorganic additives and agents thixotropic.

USES

Created especially for theming of the ESTonetex® System, realization of reliefs of varied aspects, carved stone, rocks, waterfalls, fountains, etc ... Realization of waterproofing coatings or surface decoration applied in one or more layers with the possibility of execute different finishes or textures. Ornamental elements such as fountains, fences, regularization of walls, facades, repair of cornices, balcony corners, edges, etc ...

ADVANTAGES

- Great thixotropy.
- Permeable to water vapor.
- Lightened. Projectable.
- Waterproof to rain water.
- Excellent adherence.
- Compensated shrinkage.
- Great hardness.
- Fiber reinforced.

Only with water:

5.25-6.25 liters will be used for every 25 kg of ESTonetex®-Sulforesistente of water.

PACKAGING

ESTonetex®-Sulforesistente is packed in multi-sheet paper bags with antihumidity sheet of 25 kg (+/- 2%). 1200 kg pallet (48 bags).

TECNICAL DATA

Product identification and application data	
Appearance	Powder
Color	Gray
Yield	15-20 kg/m ² per 1 cm of thickness
Composition	Special cements, light aggregates, thixotropic additives.
Workability time:	
Start of setting	3-6 H according temperature and humidity
End of setting	4-7 H
Application temperature	Between 5°C and 30°C
Minimum thickness per layer	5 mm
Maximum thickness per layer	200 mm
Pigmented or tinted	EST-26 Multilite, EST-MultiPol EST-Mixol (check color chart)
Compatibility	do not mix with other products
Granulometric range	0-800 µm
Special additives	EST-26 Multilite
Category	CR-CSIV W2 with CE marking
Reaction to fire	Class A1
Adhesion	> 0.35 MPa

Recommended to waterproof with EST-3 Plus N



ID:0004/2012 ER-1089/1999



ESTonetex® System

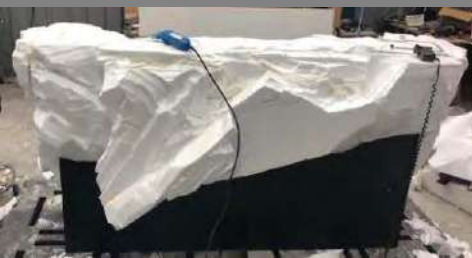
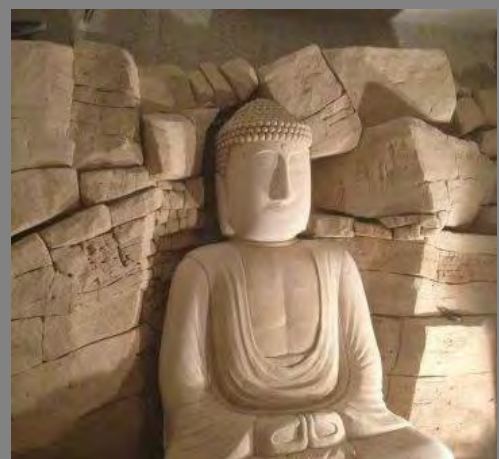
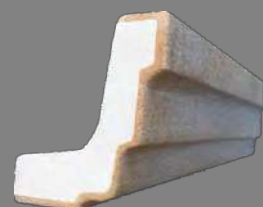
THIN LAYER ON TOP OF POREXPAN

ESTonetex®-Forte and ESTonetex®-Forte Mix mortars are specially created to make perfectly natural finishes with a thin layer of 5-15 mm on top of plates or volumetry of expanded or extruded porex.



Stones, Rocks and Waterfalls
Facades

Scenery
Sculptures and decorations



ESTonetex®-Forte

THIN LAYER ON TOP OF POREXPAN
THEMING OF ROCKS, STONES, WOODS, SCULPTURES

THIN LAYER



DESCRIPTION

The ESTonetex®-FORTE mortar is a special mortar for Theming of the ESTonetex®System, in a 3-12 mm thin layer on top of porex, EPS or other low absorption materials, indoors and outdoors. Its great adherence, plasticity and hardness allows a perfect adaptation to the supports to be able texture it in a wide variety of finishes. Formulated based on polymers of latest generation, provides excellent workability, adhesion accelerated and very good resistance to mechanical stress.

USES

Especially indicated where the best performance is required for reproduce rocks, stones, woods, decorations, etc., in a thin layer and directly on top of polystyrene cores or other supports previously prepared. Due to strong grip resistance and easy application, it is ideal for:

- Coating of surfaces or volumetry of porex (expanded or extruded).
- Tear and impact resistant finishes and textures.
- Areas with large differences in humidity and temperature.
- Greater width, high open time, allows the rectifications of pieces.
- Ideal for covering large formats without the need to increase the thickness.
- Rapid development of work qualities and reduced thicknesses (3-12 mm).

ADVANTAGES

- Accelerated adhesion on all porex and EPS substrates.
- Shock and impact resistant.
- Thixotropic for variable thicknesses (3-12 mm or more).
- High open time, allows rectifications.
- Resistant to the formation of molds and microorganisms.
- Deformable, great plasticity and elasticity.
- No vertical slip (anti-sag).
- Exceptional fineness, natural texture.
- High resistance to water and thermal shocks (submerged pools and rocks).

Only with water:

For every 25 kg de ESTonetex®-FORTE used 4,75-5,75 liters of water.

PACKAGING

ESTonetex®-FORTE is packed in multi-foil paper bags with 25kg (+/- 2%) anti-humidity sheet. 1200 kg pallet (48 bags).

TECNICAL DATA

Product identification and application data	
Appearance	Powder
Color	Sandstone
Yield	1,5-2.0 kg/m ² per 1 mm of thickness
Composition	Special cements, limestone sands. various additions.
Workability time	>1-2 H
Application temperature	Between 5°C and 30°C
Minimum thickness per layer	3 mm
Maximum thickness per layer	12 mm
Pigmented or tinted	EST-26 Multilite, EST-MultiPol+Mixel EST-Mixel (check color chart)
Compatibility	do not mix with other products
Special additives	EST-26 Multilite
Category	ETE 16/0129 ETAG 004
Reaction to fire	Class F
Adhesion	to the cohesion of the plate

Recommended to waterproof with EST-3 Plus N



EN 998-1

ESTonetex®-Forte Mix

COMPONENT A for mix with EST-EPS

THIN LAYER

MORTAR FOR THEMING OF ROCKS, STONES, WOODS, SCULPTURE



COMPONENTS: A + B



TÜVRheinland®
Precisely Right.



DESCRIPTION

The ESTonetex®-Forte Mix is a two component thixotropic mortar for 2-15 mm thin film on top of polystyrene, EPS or other little absorption, indoors and outdoors. Its composition with lime, high plasticity, resistance to water and maximum hardness, allows a perfect adaptation to supports to be able to texturize it in a wide variety of finishes.

It consists of a mixture of the ESTonetex®-Restaura Cal Plus mortar with the EST-EPS resin specially designed for the ESTonetex® System.

USES

Especially indicated where the best performance is required for reproduce rocks, waterfalls, woods, sculptures, etc ..., in a thin layer and directly on top of polystyrene cores or other supports previously prepared. Due to its strong grip, resistance and easy application, it is ideal for:

- Coating of surfaces or volumetry of porex (expanded or extruded).
- Areas with large differences in humidity and temperature.
- Ideal for covering large formats without the need to increase the thickness.
- Rapid development of work qualities and reduced thicknesses (2-15 mm).

ADVANTAGES

- Accelerated adhesion on all porex and EPS substrates.
- Greater resistance to salts.
- Thixotropic for variable thicknesses (2-15 mm or more).
- Resistant to the formation of mold and microorganisms.
- Deformable, great plasticity and elasticity.
- No vertical slip (anti-sag).
- Great resistance to water and thermal shocks (swimming pools and submerged rocks).
- Excellent reprofiling properties.

With EST-EPS:

For every 25 kg of ESTonetex®-Restaura Cal Plus a previous dissolution of EST-EPS with water in a ratio from 1:1 to 1:3 parts of water.

PACKAGING

ESTonetex®-Restaura Cal Plus is packed in multi foil paper bags 25 kg with foil anti-humidity (+/-2%). 1 200 kg pallet (48 bags). The EST-EPS resin is packaged in 5 and 25 liters plastic drums.

TECNICAL DATA

Product identification and application data	
Appearance	Powder
Color	Sandstone
Yield	1,25 kg/m² per 1 mm of thickness
Composition	White cement, limestone sands. calcium dihydroxide, additives.
Workability time	>1-2 H
Application temperature	Between 5°C and 30°C
Minimum thickness per layer	2 mm
Maximum thickness per layer	15 mm
Pigmented or tinted	EST-26 Multilite, EST-MultiPol+Mixol EST-Mixol (check color chart)
Compatibility	do not mix with other products
Special additives	EST-EPS
Category	ETE 16/0129 ETAG 004
Reaction to fire	Class F

Recommended to waterproof with EST-3 Plus N

EST-EPS COMPONENT B for mix with ESTonetex -Restaura Cal Plus

THIN LAYER MORTAR BINDER ADDITIVE ON TOP OF POREXPAN



COMPONENT B



DESCRIPTION

EST-EPS is a special concentrated consolidating additive based on acrylates pure and polyurethane, water-based and solvent-free, colorless. Improves adherence, resistance and impermeability of porex, mortar and metal surfaces, as well as of the mortars to which it is added.

USES

Thanks to its combination of pure acrylates and polyurethane, it is used especially to add the ESTonetex®-Restaura Cal Plus mortar and obtain the ESTonetex®-Forte Mix mortar for thin layer on top of porex. Also I know used as a protector and consolidator of floors and mortar pavements and concrete, theming of the ESTonetex® System and antirust protector for metals.

ESTonetex®-Restaura Cal Plus mortar additive: gives the mix greater adhesion on top of porex, plasticity, workability, toughness, and improvement thixotropy. Thin-film theming on top of porex (expanded or extruded) or other surfaces with little absorption.

As a protector and consolidator: on pavements or horizontal surfaces with great wear, penetrates the pores of the foundation generating a micro-skin surface that increases hardness and impermeability. Dissolution from 1:1 to 1:3 with water. Can be colored with EST-Mixol pigments up to a maximum concentration of 3%.

With ESTonetex®-Restaura Cal Plus:

Mixing ratio: preliminary dissolution 1 part EST-EPS with 3 parts of water.

ADVANTAGES

- Increases adhesion on the surface of the porex.
- Increases impermeability.
- Ease of shaping the dough.
- Indoor and outdoor.
- Easily colorable with EST-Mixol pigments.
- High penetrability into surface pores.
- Good permeability to water vapor.
- Reduction of cracks when drying.

PACKAGING

EST-EPS is packaged in 5 and 25 liter plastic drums.

TECNICAL DATA

Product identification and application data	
Appearance	Liquid
Color	Colorless
Gloss grade	Satin
Pigmentation	Maximum 3% with EST-Mixol
Yeld	4-10 m²/l pure
Composition	Pure acrylates and polyurethane
Binder	Acryl-polyurethane isocyanate
Density	Approximately 1.02
Application temperature	Between 5°C and 30°C
Compatibility	do not mix with other products
Dissolution: protector or consolidant as additive for mortars	from pure to 1:3 parts of water dissolution 1:6 parts of water
Storage	1 year at room temperature



ESTonetex® System

THEMATIC PAVEMENTS

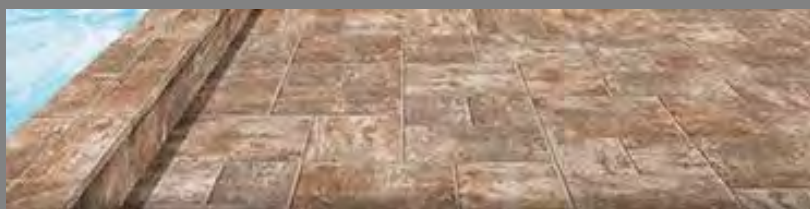
ESTonetex®-Pav completes the range of mortars ESTonetex® to create pavement, flooring areas, steps, or decorative elements in theming that face great mechanical wear.



Pavements

Steps

Bridges



ESTonetex®-Pav

WATERPROOFING MORTAR PAVEMENT
AND HORIZONTAL THEMING



DESCRIPTION

ESTonetex®-Pav is a onecomponent mortar for floors, of compensated and fiber reinforced shrinkage for horizontal theming of the ESTonetex® System, which allows molding, sculpting, molding and stamping.

Applied in thicknesses from 1 cm to 2 cm, it is the ideal solution for pavements where large screeds cannot be made. High mechanical resistance to heavy traffic.

USES

Realization of reliefs and sills of varied aspects. Stone theming carved, ashlar, stamping with molds, etc ... Realization of pavements of decoration applied in one or more layers with the possibility of executing different finishes or textures. Ornamental elements, regularization of screeds , rehabilitation, repair of chips, corners, etc ...

ADVANTAGES

- Great thixotropy.
- Projectable.
- Load distribution.
- Permeable to water vapor.
- Waterproof to rain water.
- Excellent adherence.
- Compensated shrinkage.
- Great hardness.
- High mechanical resistance.
- Fiber reinforced.

Only with water:

For every 25 kg of ESTonetex®-Pav 4.25 -5.25 liters of water will be used

PACKAGING

ESTonetex®-Pav is packed in multi-foil paper bags 25 kg with foil anti-humidity (+/-2%). 1200 kg pallet (48 bags).

TECNICAL DATA

Product identification and application data	
Appearance	Powder
Color	Sandstone
Yield	20 kg/m² per 1 cm of thickness
Composition	Special cements, light aggregates. thixotropic additives.
Workability time: Start of setting End of setting	3-6 H 4-7 H according temperature and humidity
Application temperature	Between 5°C and 30°C
Minimum thickness per layer	10 mm
Maximum thickness per layer	200 mm
Pigmented or tinted	EST-26 Multilite, EST-MultiPol EST-Mixol (check color chart)
Compatibility	do not mix with other products
Granulometric range	0-800 µm
Tariff item	3824.50.09.00
Reaction to fire	Class A1
Adhesion	≥ 1 MPa
Compressive strength	≥ 20 MPa
Flexure strength	≥ 6 MPa

Recommended to fixation and protection with EST-Floor



ID:0004/2012 ER-10891999

ESTonetex®-Park M

MORTAR FOR STRUCTURES AND MESH WITH REINFORCEMENT
THEMING WITH LARGE THICKNESSES

THEMING PARKS



DESCRIPTION

ESTonetex®-Park M is a high resistance micro-concrete, special for theme parks, climbing walls, rocks, etc. It stands out for its spectacular projection with a machine and its great thixotropy. Formulated with high initial strength cement, selected granulometry aggregates and organic additives that give the mortar high workability and adherence to supports. Especially used for the ESTonetex® Theming System and as an anchoring base on top of galvanic or fiberglass mesh structures. Ideal in theming works with great thicknesses and/or use of armor. Available in fine and thick version.

USES

Especially used for new concepts of theme parks, climbing walls, rocks and all kinds of reproductions of the ESTonetex® System, for reinforced and mesh surfaces, where high resistance is needed in the realization of volumetrics with great thicknesses and/or as basic support in structures for the ESTonetex - Expanded mortar that is going to be themed.

ADVANTAGES

- Easy carved and textured.
- Great thixotropy, excellent workability.
- Manual or mechanical application. Projectable.
- High water retention.
- Indoor and outdoor application.
- Fast and secure application.
- High mechanical resistance.
- Free of chlorides.

Only with water:

For every 25 kg of ESTonetex®-Park M be used 3,75-4,75 (Fine) and 3,25-4,25 (Thick) liters of water.

PACKAGING

ESTonetex®-Park M is packed in multi-sheet paper bags 25 kg with foil anti-humidity foil (+/-2%). 1200 kg pallet (48 bags).

TECNICAL DATA

Product identification and application data	
Appearance	Powder
Color	White or gray.
Yield	20 kg/m ² per 1 cm of thickness
Mixing water	± 17% (Fine) ± 15% (Thick)
Workability time	>1-2 H
Application temperature	Between 5°C and 30°C
Minimum thickness per layer	10 mm
Maximum thickness per layer	30 mm
Fine grain size range	Fine-0-2 mm Thick-0-4 mm
Kneading water	≤ 0,4 Kg/m ² min ^{1/2}
Compatibility	do not mix with other products
Tariff item	3824.50.09.00
Reaction to fire	Class F
Adhesion	≥ 0,3 MPa
Compressive strength	≥ 25,0 MPa
Thermal conductivity	≥ 0,92 W/m·k



ESTonetex®-Fibrax

SUPERFIBED MORTAR THAT SUPPLIES THE MESH
THEMING OF ROCKS, STONES, WOODS



DESCRIPTION

ESTonetex®-Fibrax is a superfibrated mortar composed of cement, resin, fibers, limestone aggregates with a controlled granulometry and additives that give it excellent workability and high adherence.

USES

Especially recommended in Theming of the ESTonetex® System, in rehabilitation works or as a primer in general and a high-adherence mineral bonding bridge on surfaces, especially expanded (EPS) or extruded (XPS) polystyrene and similar surfaces.

Even on mineral bases, if it is deemed necessary to use a highly adherent mineral primer with a suitable texture to receive ESTonetex® mortars on surfaces to be themed.

ADVANTAGES

- High adherence to EPS and XPS polystyrene.
- High fiber content.
- Replaces the anti-crack mesh.
- Better grip for mortars that are applied on top.
- Manual application or with a projection machine.
- Easy application and workability.
- Compression resistance.
- High resistance to bending.

Only with water:

For each 25 kg bag of ESTonetex -Fibrax, start with 5.5 liters of water, until the appropriate consistency is achieved.

PACKAGING

ESTonetex -Fibrax is packaged in 25 kg (+/- 2%) multi-sheet paper bags with antihumidity foil. 1200 kg pallet (48 bags).

TECNICAL DATA

Product identification and application data	
Appearance	Powder
Color	Gray
Composition	Gray cement, resin, fibers, limestone aggregates and additives.
Consumption	12-13 kg/m² per 1cm thickness
Yield	2m²/bag per 1cm thickness
Granulometric range	Continuous from 0 to 2 mm
Fresh density	1,45 kg/liter (+/-0,1) (UNE-EN 1015-8)
Air content of fresh mortar	≥ 30% (UNE-EN 1015-7)
Compressive strength 28 day	≥ 15 N/mm² (UNE-EN 1015-11)
Flexural strength 28 days	≥ 4 N/mm² (UNE-EN 1015-11)
Adhesion to polystyrene (EPS)	≥ 0,2 N/mm² (support breakage)
Adhesion (FP) (UNE-EN 1015-12)	≥ 0,3 N/m m² (A/B)(boot from support)
Reaction to fire (EN-12004)	E (1)

Beyem-NeoCal Base

LIME MORTAR FOR PLASTERING, HIDROPHOBIC
FOR FACADES AND CEILINGS

PLASTERED



DESCRIPTION

Beyem-NeoCal Base is a water-repellent, waterproof and breathable for facade plastering that integrates perfectly with the ESTonetex System, both in new construction and in rehabilitation.

Formulated with mixed binders, air lime, granulometric aggregates and selected whiteness, water repellents and other organic additives. Classified as A + according to Décret n ° 2011-321 (France).

USES

Lime -based mineral mortar for rendering of facades and surfaces irregular, thick layer in new construction and rehabilitation. Suitable as base mortar to compensate for surface irregularities and flatness of the support. Applicable on walls and ceilings both indoors and outdoors, manually or projected.

ADVANTAGES

- High breathability, allows the wall to breathe.
- Manual or mechanical application. Projectable.
- Mechanical resistance corresponding to lime mortars.
- Indoor and outdoor application.
- Great plasticity.
- Protection against rainwater.
- Applicable directly on the enclosure.
- Radiation Free Certificate.

Only with water:

For every 25 kg of Beyem-NeoCal Base 4.5 -5.0 liters of water will be used.

PACKAGING

Beyem-Neo Cal Base is packed in multi-sheet paper bags 25 kg with foil anti-humidity (+/- 2%). 1200 kg pallet (48 bags).

TECNICAL DATA

Product identification and application data	
Appearance	Powder
Color	White
Yeld	16 kg/m ² per 1 cm of thickness
Grain range	0-2 mm
Minimum finish thickness	10 mm
Maximum thickness per layer	15 mm
Maximum application thickness	40 mm in three layers
Water absorption	0.2 kg / m ² min ^{1/2}
Mixing water	± 19%
Tariff item	3824.50.09.00
Reaction to fire	Class A1
Adhesion	≥ 0,2 MPa
Compressive strength	≥ 1,5 MPa
Total VOCs (28 days)	≤ 500µg / m ³
Classification	GP CSII W1



Certificado nº LQAI.MC.19/17
UNE-EN 16000-09



Calidad Ambiente Interior



Beyem-NeoCal Fino

PLASTED

LIME MORTAR BREATHABLE FOR DECORATION OF FACADES
AND INTERIOR PLASTERS



DESCRIPTION

Beyem-NeoCal Fino is a breathable and waterproof lime mineral mortar decoration of facades and interior plasters within the ESTonetex® System. Formulated with mixed binders, air lime, granulometric aggregates and selected whiteness, water repellents and other organic additives. In several colors, finishes of fine scraping, floated, smooth or burnish. Classified as A + according to Décret n ° 2011-321 (France).

USES

Colored final coating in 4-6 mm layer for very fine finishes and smooth, both on walls and ceilings Used indoors and outdoors, in new construction and renovations. It offers water-repellent protection on facades. Especially indicated as a finish for a ESTonetex® System and High Decoration.

ADVANTAGES

- High breathability, allows the wall to breathe.
- Manual or mechanical application. Projectable.
- Mechanical resistance corresponding to lime mortars.
- Indoor and outdoor application.
- Great plasticity.
- Protection against rainwater.
- Very fine varied finishes.
- Radiation Free Certificate.

Only with water:

For every 25 kg of Beyem-NeoCal Fino 5.0-5.5 liters of water will be used.

PACKAGING

Beyem-Neo Cal Fino is packed in multi-sheet paper bags 25 kg with foil anti-humidity (+/- 2%). 1200 kg pallet (48 bags).

TECNICAL DATA

Product identification and application data	
Appearance	Powder
Color	According to color chart
Yield	1.4 kg/m ² per 1 cm of thickness
Grain range	0-600 µm
Medium thickness	4-6 mm
Apparent density	~1320 kg/m ³
Mix density	~1700 kg/m ³
Mixing water	± 19%
Tariff item	3824.50.09.00
Reaction to fire	Class A1
Adhesion	≥ 0,15 MPa
Compressive strength	≥ 1,5 MPa
Total VOCs (28 days)	≤ 500µg / m ³
Water absorption	0.2 kg / m ² min ^{1/2}
Classification	GP CSII W2



Certificado nº LQAI.MC.19/17
UNE-EN 16000-09



Calidad Ambiente Interior



◆ The THEMATIZER SHOP ◆

on-line



Get Inspired

in our networks to have the latest updates and interact with professionals.



INTERNATIONAL
THEMING
SCHOOL

ESTECHA®

